



CHAIR

Robert L. Trestman, PhD, MD
Chair, Department of Psychiatry
Carilion Clinic
Roanoke, VA



CHAIR-ELECT

Arpan Waghray, MD
Executive Medical Director
Behavioral Medicine
Swedish Health Services
Chief Medical Officer, WellBeing
Trust
Chair, Behavioral Medicine
Leadership Council
Providence Health and Services
Swedish Issaquah
Sammanish, WA



PAST-CHAIR

Raymond A. Waller, MPH
Hospital Administrator
Ascension Brighton Center for
Recovery
Ascension Healthcare
Brighton, MI



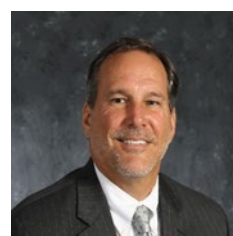
AHA BOARD LIAISON

Harsh K. Trivedi, MD, MBA
President and CEO
Sheppard Pratt Health System
Baltimore, MD

TERMS EXPIRE 2021

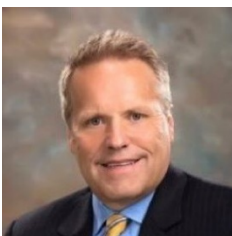


Brenda Romero, RN, MSN
Hospital Chief Executive
Presbyterian Espanola Hospital
Presbyterian Healthcare Services
Espanola, NM

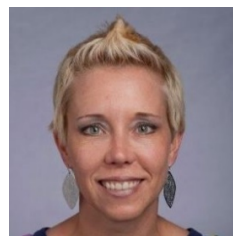


Matthew Stanley, DO, DFAPA
Clinical VP
Behavioral Health Service Line
Avera Behavioral Health Campus |
AMG Psychiatry
Sioux Falls, SD

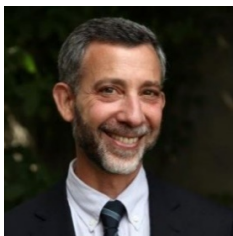
TERMS EXPIRE 2022



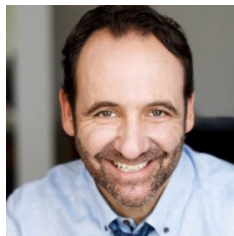
Craig Aasved, MBA, FACHE
Chief Executive Officer
Shodair Children's Hospital
Helena, MT



Jill Howard, RN, BSN, MBA-HCM
Senior Director, Behavioral Health
LifePoint Health
Nashville, TN



Louis Josephson, PhD
President and CEO
Brambleboro Retreat
Brambleboro, VT



Jess P. Shatkin, MD, MPH
Vice Chair for Education
Director of Undergraduate Studies
Child & Adolescent Mental Health
Studies (CAMS)
NYU College of Arts & Science
Professor of Child & Adolescent
Psychiatry and Pediatrics
Hassenfeld Children's Hospital at
NYU Langone | Department of Child
and Adolescent Psychiatry
New York, NY



Helen J. Strike, BScN, MHA
President, River Falls Area Hospital
River Falls, WI
&
President, Regina Medical Center
Hastings, MN

TERMS EXPIRE 2023



John Boyd, PsyD, MHA
Chief Executive Officer
System Mental Health Services
Sutter Health
Sacramento, CA



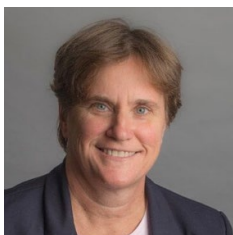
Zelia Baugh
Executive Vice President
Behavioral Health
JPS Health Network
Fort Worth, TX



Kathleen Brady, MD, PhD
Addiction Psychiatrist &
Vice President for Research
MUSC Health
Medical University of South
Carolina
Charleston, SC



Mark Chastang, MPA, MBA, FACHE
Chief Executive Officer
Saint Elizabeths Hospital
Washington, DC



Mary Marran, MS, OT, MBA
President and COO
Butler Hospital
Interim President and COO
The Providence Center
Providence, RI



Manish Sapra, MD, MMM, FAPA
Executive Director
Behavioral Health Service Line
Northwell Health
Glen Oaks, NY



Alpa Shah, MD
Director
Perinatal Mental Health Clinic
Medical Director
Behavioral Health
Security Health Plan
Chair, Physician Health & Allied
Professionals Health Committee
Marshfield Clinic Health System
Marshfield, WI



Jair C. Soares, MD, PhD
Professor and Chairman
Louis A. Faillace, M.D. Department of
Psychiatry and Behavioral Sciences
UT Houston Medical School
Executive Director, UT Harris County
Psychiatric Center
&
Director, UT Center of Excellence on
Mood Disorders
UTHealth Physicians Psychiatry
Outpatient Clinic
Houston, TX



NABH Designated Liaison
Gina Sharp, FACHE
President, Linden Oaks
Edward-Elmhurst Health
Naperville, IL

REGIONAL POLICY BOARD

RPB Delegate/Term Expires 2021

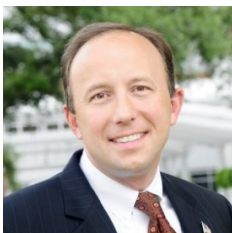


Stuart Buttlair, PhD, MBA
Regional Director
Behavioral Health
Kaiser Foundation Hospitals
Oakland, CA



Paul Rains, RN, MSN
System SVP, Behavioral Health
President, St. Joseph's Behavioral
Health Center (or SJBHC)
CommonSpirit Health
Stockton, CA

RPB Delegate/Term Expires 2022



Michael (Mike) Nagowski
President and CEO
Cape Fear Valley Health System
Chief Executive Officer
Cape Fear Valley Medical Center
Fayetteville, NC



**AHA Liaison to NIAAA/
Term Expires 2021**

Martha Mather, MEd
Chief Administrative Officer
Peace Hospital
UofL Health
Louisville, KY



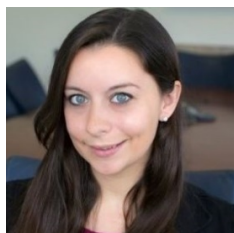
**AHA Liaison to APA
Term Expires 2021**

Robert L. Trestman, PhD, MD
Chair, Department of Psychiatry
Carilion Clinic
Roanoke, VA

AHA STAFF



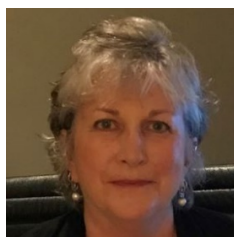
Kristin Pearson
VP, Field Engagement
(312) 422-2875
kpearson@aha.org



Caitlin Gillooley, MPH
Associate Director, Quality &
Behavioral Health Policy
Development
(202) 626-2267
cgillooley@aha.org



Priscilla Ross
Senior Associate Director Federal
Relations
(202) 626-2677
pross@aha.org



Rebecca Chickey, MPH
Director, Field Engagement
Behavioral Health
(312) 422-3303
rchickey@aha.org

Ruth Coffey
Field Engagement Coordinator
(312) 422-3302
rcoffey@aha.org