

Why Can't We All Just Get Along?

*A look at hospital/FQHC
relationships in Hays, KS and
Lexington, MO*

Rural Hospital Executive Education Series





American Hospital
Association

Welcome



LAFAYETTE REGIONAL
HEALTH CENTER



HAYSMED



LRHC & Live Well HCC



LRHC is a 25-bed CAH that offers a complete acute care program that includes general medical and surgery facilities to provide care for inpatient and outpatient surgery, emergency care as well as in-depth skilled care services for patients requiring a longer hospital stay.



HCC implements and supports countywide and in some instances regional programs that help create access to education, awareness, prevention and treatment services. Live Well has clinics in Buckner, Carrollton, Concordia and Waverly, Missouri.



American Hospital Association

Origin of Collaboration

LiveWell
Community Health Center
Live Life Well



NEW Live Well Community Health Center

open in Buckner at 324 S Hudson Street!

816-249-1521

Services Available Include:

Primary care, pediatrics, disease management & prevention, well-woman exams, OB/GYN, child & adult immunizations, physicals.

Mental Health Services-

Behavioral health care, medication management.

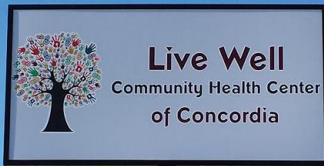
Open 8:00 am-5:00 pm Mon-Fri

324 S Hudson, Buckner, MO

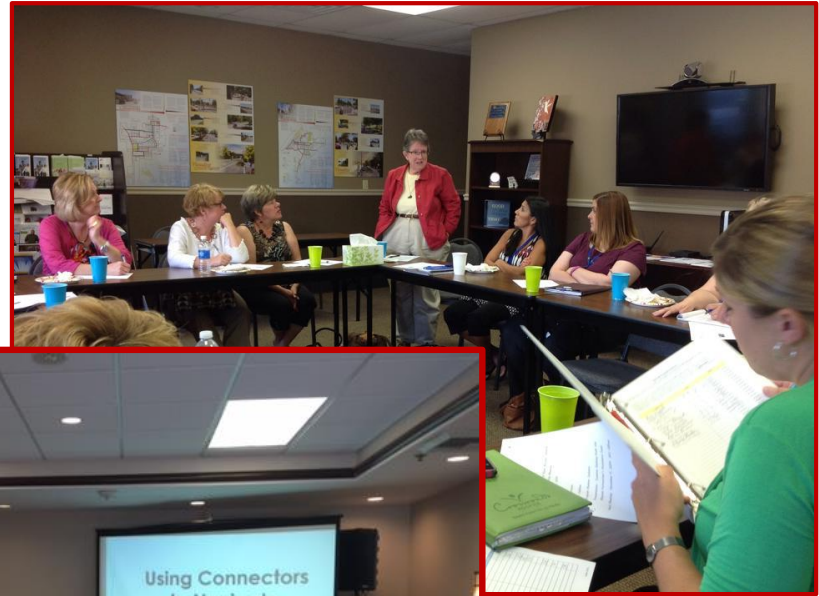
816-249-1521

Additional Services Available Summer 2016:

Diabetes management, dental cleanings, cleaning and x-rays, fillings and sealants, extractions, root canals, crowns/bridges, & dentures/partials



Current Status



Current Status



Live Well

Community Health Centers of Waverly & Concordia
Live your life well.



Doctor Visits Dental Care Mental Health Care

We Offer Behavioral Health and Psychiatric Services

If you are experiencing stress, life or family circumstances and/or symptoms that may be due to a mental health concern, we can help. Call our Waverly clinic at 660.493.2262, or Concordia at 660.463.0234 to schedule an appointment with a behavioral health consultant. Clinic hours are 8 a.m. to 5 p.m.

We'll work with you or your family to create a plan just for you. Sometimes plans include mental health, substance abuse, behavioral health and psychiatric services, in-clinic and outside provider medical referrals, as well as social service support with partner agencies. Our goal is to help you live your life well.

Clinic Locations: Live Well Community Health Center - Waverly 608 Missouri Live Well Community Health Center - Concordia 206 N. Bismark, Ste. A






Advice to Others

Expanding Access Points for Primary, Dental and Behavioral Health

Lafayette Regional Health Center
Health Care Collaborative of Rural Missouri
Lexington, Missouri

- HCC and its Live Well Clinics work with the LRHC emergency department to assist patients who frequently use the emergency room with finding a primary care doctor, dentist or behavioral health professional.
- Live Well Community Health Centers offer dental, behavioral health, primary care and social support services and have achieved Level III Patient Centered Medical Home recognition under NCQA.
- By collaborating, the providers have expanded access, improved efficiency, enhanced the health of the population and maximized resource utilization by avoiding unnecessary duplication of services while directing patients toward the appropriate site of service.



LAFAYETTE REGIONAL
HEALTH CENTER



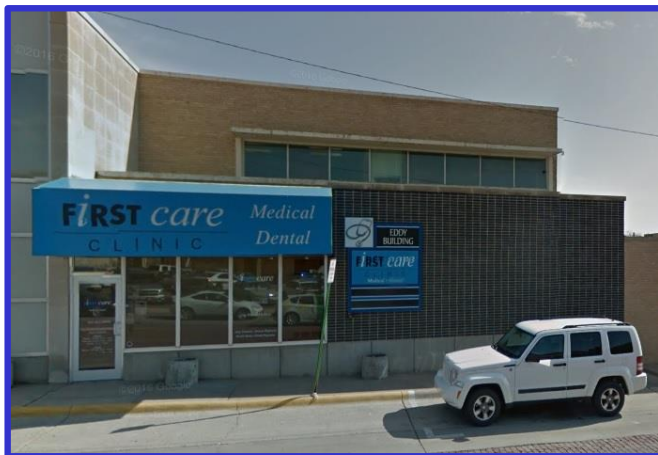
LiveWell
Community Health Center
Live Life Well



HaysMed & First Care Clinic



Hays Medical Center is a private, not-for-profit hospital. The organization's Vision Statement, reflects a single core purpose: "To Help People Be Healthy," and an overriding goal: "To Be the Best Tertiary Care Center in Rural America."



First Care Clinic is a FQHC providing health care services for people of all ages, regardless of the patient's ability to pay. It stands apart from other clinics because its the only facility in the area that houses medical care, mental health services, and general dentistry, all under one roof.

Origin of Collaboration



Strategic Alignment



Current Status

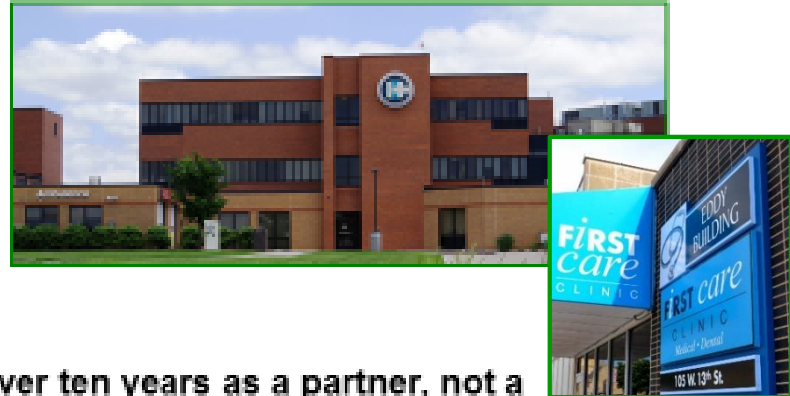


KANSAS HEART AND STROKE COLLABORATIVE
 A healthcare innovation award program of The University of Kansas Hospital

Advice to Others

Expanding and Improving Access to Primary Care

Hays Medical Center, KS
First Care Clinic, Hays, KS



- HaysMed has supported FCC for over ten years as a partner, not a competitor.
- FCC began as a free clinic staffed one night per week until demand exceeded supply; the clinic hours were then expanded.
- The leadership of HaysMed and FCC saw an opportunity to complement one another with FCC providing primary care, dental care and mental health services and HMC providing the balance of imaging, lab and other ancillary services to the community.
- Open lines of communication between the leaders of each provider organization have enhanced patient services and processes to the advantage of the community.





American Hospital
Association

Discussion

**Questions and
Comments**





American Hospital
Association

Questions

John Supplitt

Senior Director

AHA Section for Small or

Rural Hospitals

Chicago, IL

312-422-3306

jsupplitt@aha.org



American Hospital Association