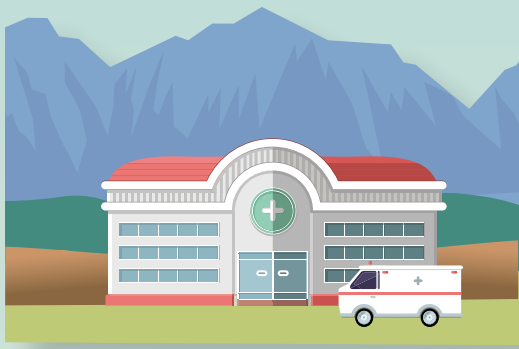


FAST FACTS | U.S. Rural Hospitals

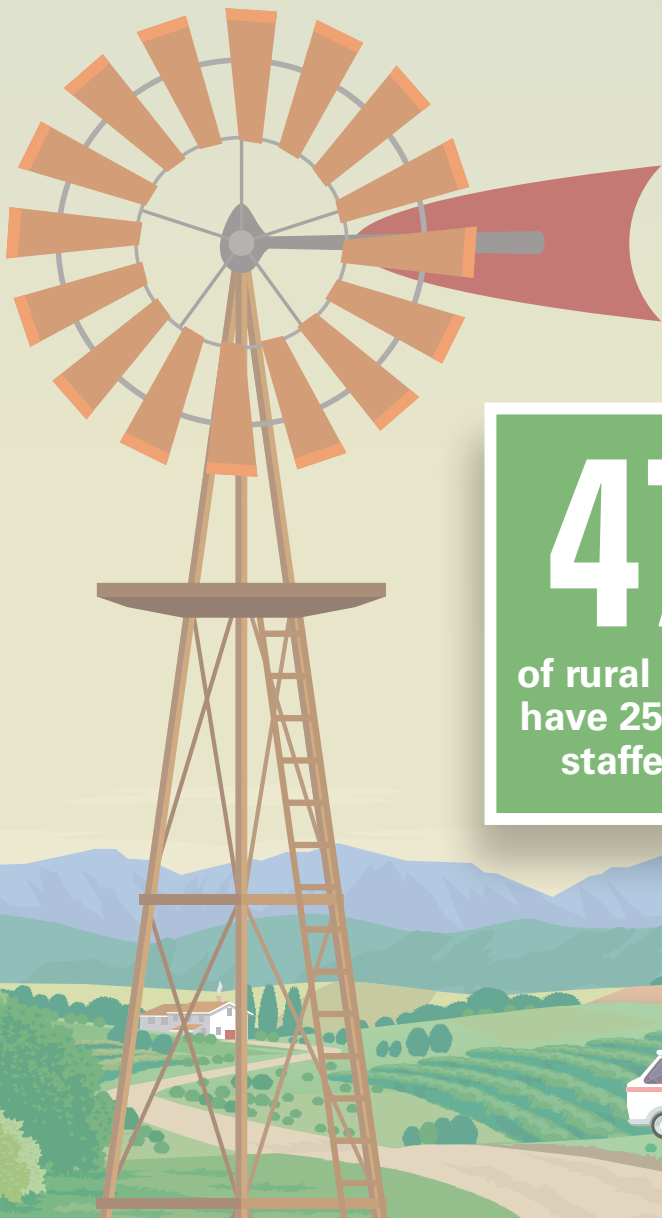
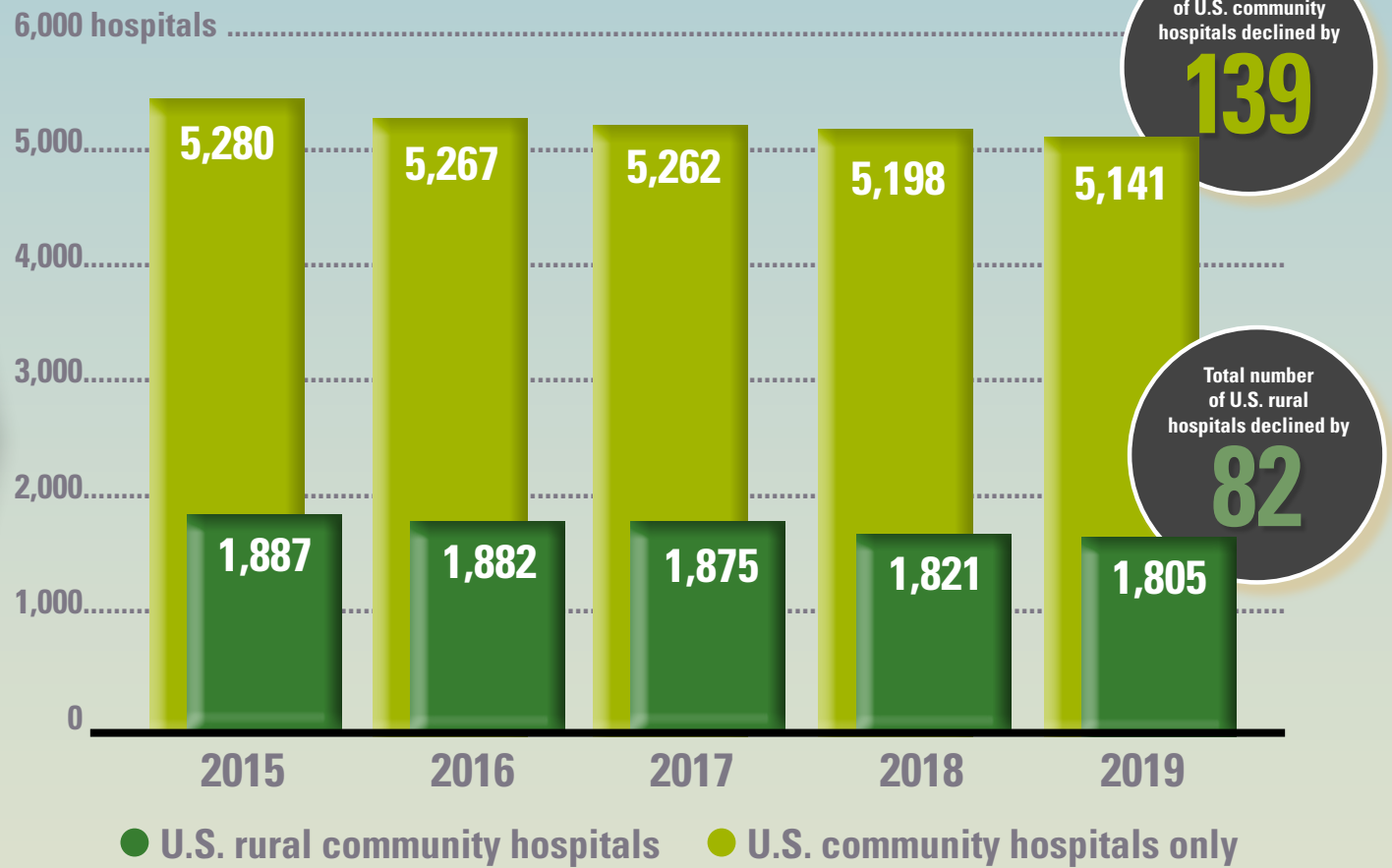


IS MY HOSPITAL RURAL?

Rural hospitals are those not located within a metropolitan area designated by the U.S. Office of Management and Budget and the Census Bureau. Community hospitals are nonfederal, acute care hospitals open to the general public. For alternate rural definitions, see <https://www.ruralhealthinfo.org/am-i-rural/help#classification>.

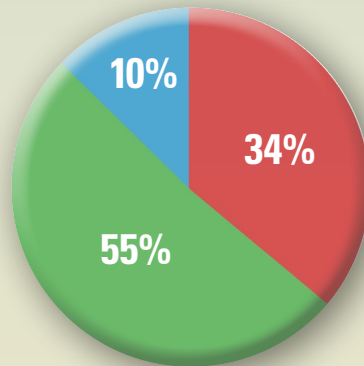
59%

of the decline in the number of U.S. community hospitals between 2015 and 2019 were **RURAL HOSPITALS**



47%

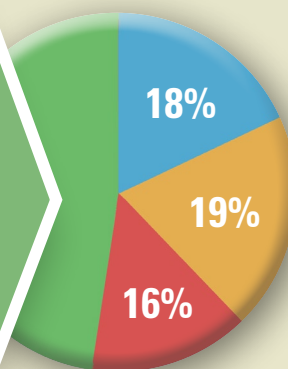
of rural hospitals have 25 or fewer staffed beds



U.S. rural community hospitals, by ownership type, 2019

- State and local government (620 total)
- Nonprofit (998 total)
- Investor-owned, for-profit (187 total)

* Data may not total 100% due to rounding



U.S. rural community hospitals, by bed size, 2019

- Up to 25 beds (850 total)
- 26-50 beds (316 total)
- 51-100 beds (345 total)
- 101 beds or more (294 total)